

CITY OF SANTA FE, NEW MEXICO

RESOLUTION NO. 2016-12

INTRODUCED BY:

Mayor Javier M. Gonzales

Councilor Peter Ives

Councilor Patti Bushee

A RESOLUTION

DESIGNATING THE GREATER SANTA FE FIRE SHED AS AN AREA THAT IS CRITICAL TO THE HEALTH AND SAFETY OF THE CITIZENS OF SANTA FE AND A PRIORITY IN REDUCING THE ECOLOGICAL AND ECONOMIC HAZARDS POSED BY WILDFIRES; INCLUDING THE GREATER SANTA FE FIRE SHED IN THE 25-YEAR SUSTAINABLE SANTA FE PLAN; AND DIRECTING STAFF TO IDENTIFY FUNDING SOURCES TO DEVELOP PROJECTS.

WHEREAS, the City of Santa Fe receives roughly 40% of its drinking water from a forested watershed that is dominated by vegetation both adapted to wildfire and also at risk from high-intensity wildfire; and

WHEREAS, the health and safety of the citizens of Santa Fe are dependent on healthy forests and watersheds for a sustainable source of drinking water; and

WHEREAS, the economy of the City of Santa Fe is connected to the natural amenities that abut the city, largely on public lands managed by the Santa Fe National Forest, that are also dominated by vegetation both adapted to wildfire, and at risk from high-intensity wildfire; and

1 **WHEREAS**, the economy of the City of Santa Fe is dependent on scenic vistas, access to
2 nearby forested trails and streams on public lands, access to Hyde Memorial State Park, picnic
3 areas and scenic overlooks, and access to a successful downhill ski area; and

4 **WHEREAS**, the aforementioned elements of the Santa Fe economy are at high risk from
5 uncharacteristic high-intensity wildfire and subsequent floods and debris flows; and

6 **WHEREAS**, the Greater Santa Fe Fire Shed affects City, County, State, Tribal, and
7 Federal jurisdictions; and

8 **WHEREAS**, the City of Santa Fe adopted resolution 2010-75, strongly supporting
9 wilderness designation for the inventoried road-less areas which are adjacent to the Pecos
10 Wilderness and

11 **WHEREAS**, designated wilderness areas require special consideration and evaluation
12 regarding active management and wildfire response; and

13 **WHEREAS**, coordination, collaboration, and cooperation between public, private, and
14 non-profit groups have been shown to gain greater public support when working together; and

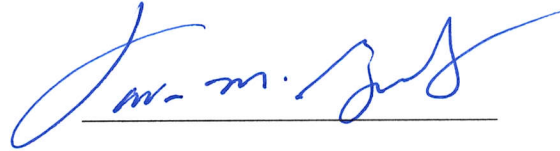
15 **WHEREAS**, the Sustainable Santa Fe Commission has been charged with developing
16 and drafting a 25-Year Sustainability Plan that will benefit the environment and people of Santa
17 Fe, and the Greater Santa Fe Fire Shed is an important part of that plan.

18 **NOW, THEREFORE, BE IT RESOLVED BY THE GOVERNING BODY OF THE**
19 **CITY OF SANTA FE** that the City establish the Greater Santa Fe Fire Shed, shown on the
20 attached Exhibit A, as a high priority area in need of fire risk reduction techniques such as
21 thinning, and prescribed and managed fire.

22 **BE IT FURTHER RESOLVED** that the Greater Santa Fe Fire Shed also be included in
23 the 25-Year Sustainability Plan to identify the programs, policies and projects to make the
24 landscape more resilient to wildfire, drought, pests and pathogens, and climate change so that the
25 City will work together with the many affected public, private and non-profit partners

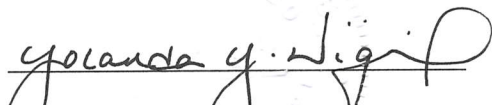
1 **BE IT FURTHER RESOLVED** that staff is directed to seek out and identify funding
2 sources necessary to fund projects pursuant to the goals of the Greater Santa Fe Fire Shed.

3 PASSED, APPROVED AND ADOPTED this 27th day of January, 2016.
4

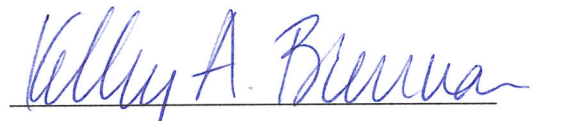
5
6 

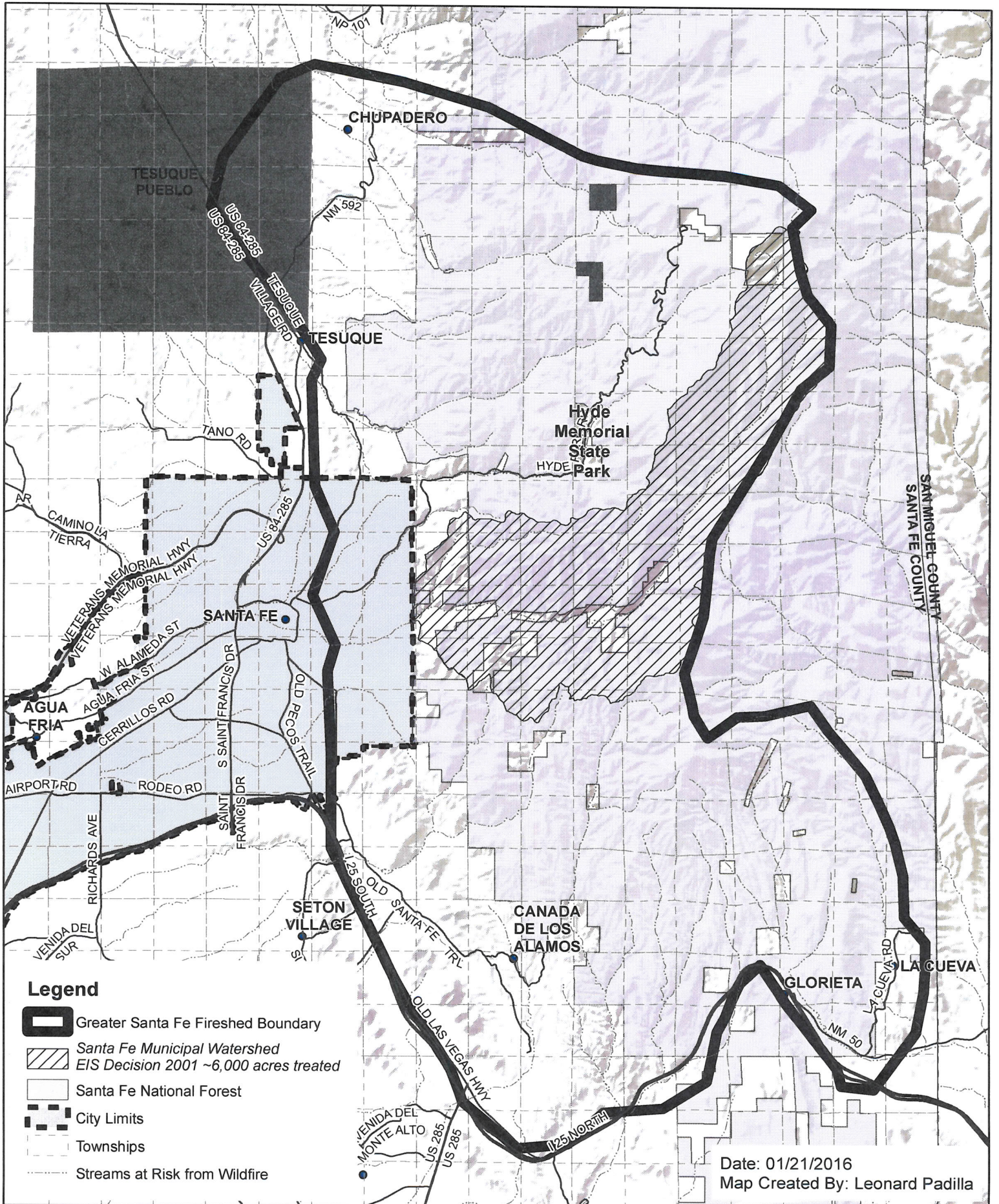
7 JAVIER M. GONZALES, MAYOR

8 ATTEST:

9
10 
11 YOLANDA Y. VIGIL, CITY CLERK

12 APPROVED AS TO FORM:

13 
14
15 KELLEY A. BRENNAN, CITY ATTORNEY



Greater Santa Fe Fire Shed



EXHIBIT

tabbles

A