

1 CITY OF SANTA FE, NEW MEXICO

2 ORDINANCE NO. 2016-44

3
4
5 AN ORDINANCE

6 AMENDING THE OFFICIAL ZONING MAP OF THE CITY OF SANTA FE;
7 CHANGING THE ZONING CLASSIFICATION FROM I-2 (GENERAL
8 INDUSTRIAL) TO C-2 (GENERAL COMMERCIAL) FOR PROPERTY
9 COMPRISING APPROXIMATELY 5.00± ACRES LOCATED ALONG THE WEST SIDE
10 OF SILER ROAD, APPROXIMATELY ONE-THIRD (1/3) MILE SOUTHWEST OF THE
11 SILER ROAD AND AGUA FRIA STREET, INTERSECTION WITHIN T17N, R9E,
12 PROJECTED SECTION 33 N.M.P.M., SANTA FE COUNTY NEW MEXICO); AND
13 PROVIDING AN EFFECTIVE DATE. (ARTS AND CREATIVITY CENTER
14 REZONING, CASE NO. 2016-89).

15
16 BE IT ORDAINED BY THE GOVERNING BODY OF THE CITY OF SANTA FE:

17 **Section 1.** That following real property (the Property) located within the municipal
18 boundaries of the City of Santa Fe, which has been restricted to and classified as I-2 (General
19 Industrial), is hereby restricted to and reclassified as C-2 (General Commercial):

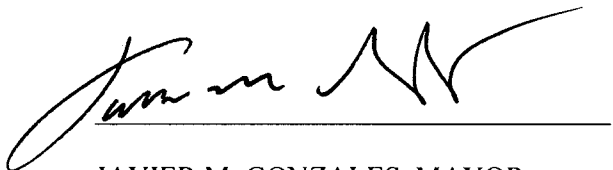
20 A parcel of land comprising approximately 5.00± acres located within Tract 2 as shown
21 and designated on the Plat entitled "Plats of Survey for City of Santa Fe, N.M. of the City
22 Yards", recorded in the office of the County Clerk of Santa Fe County New Mexico on
23 October 16, 1984 in Plat Book 146, Page 5, as described in Exhibit A attached hereto and
24 incorporated herein by reference.

25 **Section 2.** The official zoning map of the City of Santa Fe adopted by Ordinance

1 No. 2001-27 is hereby amended to conform to the changes in zoning classifications for the
2 Property set forth in Section 1 of this Ordinance.

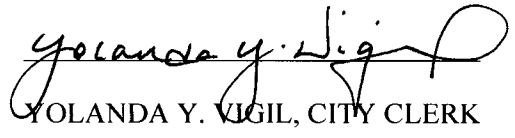
3 **Section 3.** This Ordinance shall be published one time by title and general summary
4 and shall become effective five days after publication.

5 PASSED, APPROVED and ADOPTED this 14th day of December, 2016.

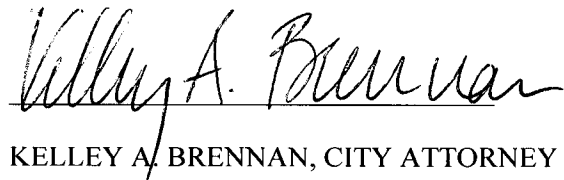
6 
7

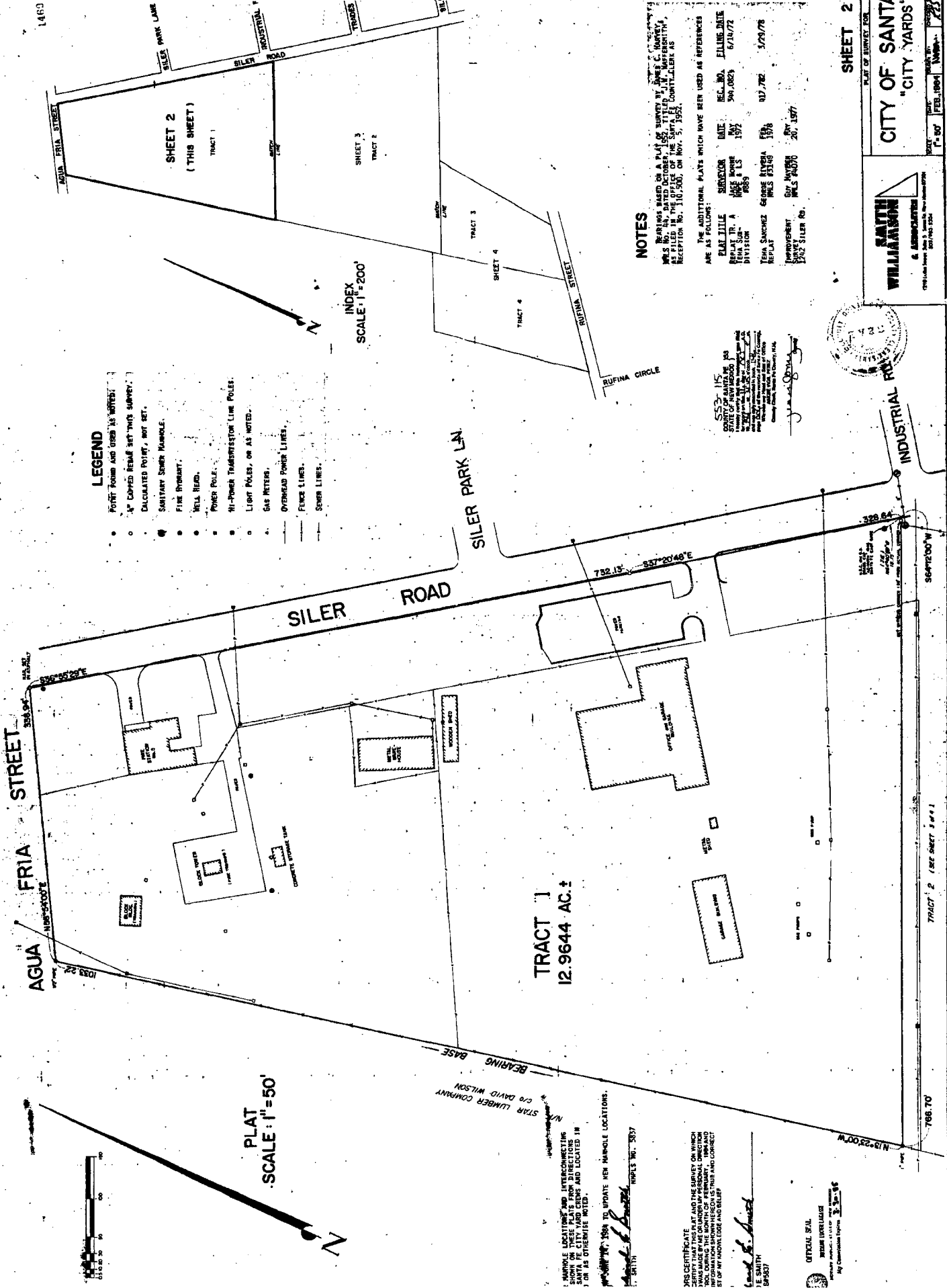
8 ATTEST:

JAVIER M. GONZALES, MAYOR

9
10 
11 YOLANDA Y. VIGIL, CITY CLERK

12
13
14 APPROVED AS TO FORM:

15 
16
17 KELLEY A. BRENNAN, CITY ATTORNEY



LEGEND

- POINT FOUND AND USED AS NOTED.
- "P" CAPPED REBAR SET THIS SURVEY.
- CALCULATED POINT, NOT SET.
- SANITARY SEWER MANHOLE.
- FIVE FOOT CURET.
- WELLS HEAD.
- POWER POLE.
- 91-POWER TRANSMISSION LINE POLE.
- LIGHT POLES, OR AS NOTED.
- GAS METERS.
- OVERHEAD POWER LINES.
- FENCE LINES.
- SEWER LINES.

INDEX
SCALE: 1"=200'

PLAT
SCALE: 1"=50'

NOTES

BEARINGS BASED ON A PLAT OF SURVEY BY JAMES C. HARVEY, M.S. IN D. OF S., OF THE COUNTY OF SANTA FE, NEW MEXICO, RECEIPT NO. 110,500, ON NOV. 5, 1955.

THE ADDITIONAL PLATS WHICH HAVE BEEN USED AS REFERENCES ARE AS FOLLOWS:

PLAT TITLE	DATE	REC. NO.	FILING DATE
REPAIR TR. A	MAY 1972	549,082A	6/21/72
INDUSTRIAL TR. A	MAY 1972	549,082B	6/21/72
INDUSTRIAL TR. B	MAY 1972	549,082C	6/21/72

TEMA SURVEYS
REPLAT
MRS. J. W. SMITH
1876
417 762
5/29/78

IMPROVEMENT
BY INVENTOR
MRS. J. W. SMITH
20, 1977

ESS-11K
COUNTY OF SANTA FE, N.M.
STATE OF NEW MEXICO
RECEIVED FOR RECORDING
FEB 14 1978
COUNTY CLERK
SANTA FE, N.M.



**SMITH
WILLIAMSON**
& ASSOCIATES
1010 Lincoln Avenue, Santa Fe, New Mexico 87505
TELEPHONE: 938-2222

TRACT J
12.9644 AC. ±

BEARING BASE
STAR LUMBER COMPANY
c/o DAVID WILSON

MANHOLE LOCATIONS AND INTERCONNECTING
SHOWN ON THESE PLATS FROM DIRECTIONS
INDICATED BY ARROWS AND LOCATED IN
3 ON AS OTHERWISE NOTED.

DATE: 1-7-87
E. SMITH
PLAT NO. 3837

FOR CERTIFICATE
I CERTIFY THAT THIS PLAT AND THE SURVEY ON WHICH
IT WAS MADE BY ME OR UNDER MY PERSONAL DIRECTION
WAS MADE IN ACCORDANCE WITH THE PROVISIONS OF
SECTION 1-11-1 OF THE STATUTES OF THIS STATE AND
IN ACCORDANCE WITH THE RULES AND REGULATIONS
OF THE BOARD OF LAND AND MINERAL INVESTIGATION
AND REVENUE.

E. Smith
E. SMITH
549337

OFFICIAL SEAL
BOARD OF LAND AND MINERAL INVESTIGATION
AND REVENUE
NEW MEXICO
AG Commission Expires: 3-31-88

TRACT 1, 2 (SEE SHEET 1 & 4)

768.70

5642.00' W

338.64

INDUSTRIAL ROAD

RUFINA STREET

RUFINA CIRCLE

SILER PARK LN

SILER ROAD

AGUA FRIA STREET

SILER PARK LAKE

INDUSTRIAL

TRACT 3

TRACT 4

TRACT 1

TRACT 2

TRACT 3

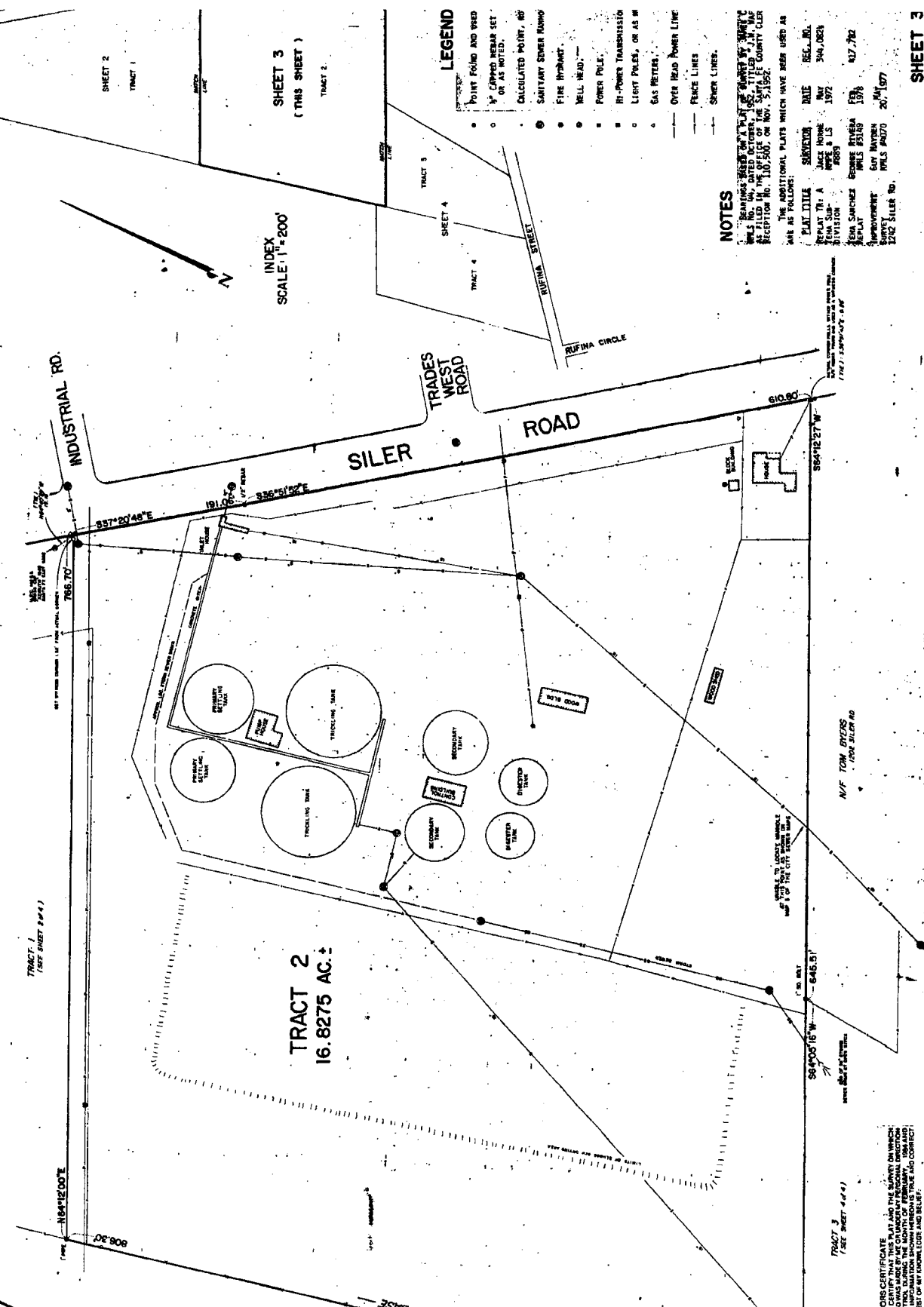
TRACT 4

TRACT 1

TRACT 2



PLAT
SCALE: 1" = 50'



TRACT 1
(SEE SHEET 2 OF 4)

INDUSTRIAL RD.

SILER ROAD

TRADES WEST ROAD

ROAD

RUFINA CIRCLE

INDEX
SCALE: 1" = 200'

SHEET 2
TRACT 1

SHEET 3
(THIS SHEET)
TRACT 2

TRACT 3

TRACT 4

LEGEND

- POINT FOUND AND USED
- CORNER BEARING SET OR AS NOTED.
- CALCULATED POINT, NOT SET
- SANITARY SEWER MAIN
- FIRE HYDRANT
- WELL HEAD
- POWER POLE
- HI-POWER TRANSMISSION
- LIGHT POLES, OR AS NOTED
- GAS METER
- OVER HEAD POWER LINE
- FENCE LINE
- SHERM LINE

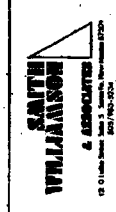
NOTES

BEARINGS AND DISTANCES ON THIS PLAT OF TRACT 2, SILER ROAD, TRACT 2, CITY OF SANTIAGO COUNTY, CALIFORNIA, AS SHOWN ON THE PLAT OF TRACT 2, SILER ROAD, TRACT 2, CITY OF SANTIAGO COUNTY, CALIFORNIA, RECORDED IN BOOK 110, PAGE 115, OF THE COUNTY CLERK'S OFFICE, SANTIAGO COUNTY, CALIFORNIA, ON MAY 5, 1957.

THE ADDITIONAL PLATS WHICH HAVE BEEN USED AS A BASIS FOR THIS PLAT ARE AS FOLLOWS:

PLAT TITLE	SERIES NO.	DATE	REC. NO.
PLAT NO. 1	1	MAY 5, 1957	340,068
PLAT NO. 2	2	MAY 5, 1957	340,069
PLAT NO. 3	3	MAY 5, 1957	340,070
PLAT NO. 4	4	MAY 5, 1957	340,071
PLAT NO. 5	5	MAY 5, 1957	340,072
PLAT NO. 6	6	MAY 5, 1957	340,073
PLAT NO. 7	7	MAY 5, 1957	340,074
PLAT NO. 8	8	MAY 5, 1957	340,075
PLAT NO. 9	9	MAY 5, 1957	340,076
PLAT NO. 10	10	MAY 5, 1957	340,077

SHEET 3



CITY OF SANTIAGO
"CITY YARDS"

SS 3, 116
SANTIAGO COUNTY
RECORDED IN BOOK 110, PAGE 115, OF THE COUNTY CLERK'S OFFICE, SANTIAGO COUNTY, CALIFORNIA, ON MAY 5, 1957.

BEARINGS AND DISTANCES ON THIS PLAT OF TRACT 2, SILER ROAD, TRACT 2, CITY OF SANTIAGO COUNTY, CALIFORNIA, AS SHOWN ON THE PLAT OF TRACT 2, SILER ROAD, TRACT 2, CITY OF SANTIAGO COUNTY, CALIFORNIA, RECORDED IN BOOK 110, PAGE 115, OF THE COUNTY CLERK'S OFFICE, SANTIAGO COUNTY, CALIFORNIA, ON MAY 5, 1957.

SURVEYOR CERTIFICATE
I, RICHARD E. SMITH, SURVEYOR, DO HEREBY CERTIFY THAT THE BEARINGS AND DISTANCES ON THIS PLAT OF TRACT 2, SILER ROAD, TRACT 2, CITY OF SANTIAGO COUNTY, CALIFORNIA, AS SHOWN ON THE PLAT OF TRACT 2, SILER ROAD, TRACT 2, CITY OF SANTIAGO COUNTY, CALIFORNIA, RECORDED IN BOOK 110, PAGE 115, OF THE COUNTY CLERK'S OFFICE, SANTIAGO COUNTY, CALIFORNIA, ON MAY 5, 1957, ARE TRUE AND CORRECT TO THE BEST OF MY KNOWLEDGE AND BELIEF.

RICHARD E. SMITH
SURVEYOR
1111 1/2 B STREET
SANTIAGO, CALIFORNIA