

1 **CITY OF SANTA FE, NEW MEXICO**

2 **ORDINANCE NO. 2009-51**

3
4
5 **AN ORDINANCE**

6 **ANNEXING APPROXIMATELY 1,956 ACRES (PHASE 1) IN ACCORDANCE WITH**
7 **THE "ANNEXATION PHASING AGREEMENT BETWEEN THE CITY OF SANTA FE**
8 **AND SANTA FE COUNTY" EXECUTED IN FEBRUARY 2009. THE PHASE 1**
9 **ANNEXATION INCLUDES AREAS 3, 6, 8, 9, 10, 11, 13, 15, 16, 17 AND THE**
10 **INTERSTATE 25 RIGHT-OF-WAY BETWEEN OLD PECOS TRAIL AND NM**
11 **HIGHWAY 599, AS SHOWN ON THE ATTACHED MAPS (EXHIBITS A-L).**

12
13 **BE IT ORDAINED BY THE GOVERNING BODY OF THE CITY OF SANTA FE:**

14 **Section 1.** Pursuant to Section 3-7-17.1 NMSA 1978 (2003), the following areas of land
15 (the "property") are annexed to the city of Santa Fe, thereby extending the corporate limits of the
16 city as shown on the accompanying annexation phasing map (Exhibit A), showing the contiguous
17 relationship of the annexed lands to the city's corporate limits.

18 **Section 2.** A petition (the "petition") prepared and submitted by the city, has been
19 presented to the duly established Extraterritorial Land Use Commission for recommendation and
20 the Extraterritorial Land Use Authority for approval. The Extraterritorial Land Use Authority did
21 review and grant approval of the Phase I Annexation petition on September 24, 2009.

22 **Section 3.** It is in the best interest of the city and county that the areas specified in the
23 Phase 1 annexation be annexed into the city of Santa Fe. The city is ready, willing and able to
24 serve the areas included in the Phase 1 annexation.

25 **Section 4.** This ordinance shall be published one time by title and general summary and

REC'D - CLERK'S OFFICE 11/16/09

1 shall become effective five days after publication.

2 PASSED, APPROVED, and ADOPTED this 10th day of November, 2009.

3
4
5 David Coos

6 DAVID COSS, MAYOR

7
8 ATTEST
9  SEAL
10 Yolanda Vigil
11 YOLANDA VIGIL, CITY CLERK

12
13 APPROVED AS TO FORM:

14 Frank D. Katz
15
16 FRANK D. KATZ, CITY ATTORNEY



17
18
19 COUNTY OF SANTA FE) CITY ORDINANCE
STATE OF NEW MEXICO) ss PAGES: 14

20 I Hereby Certify That This Instrument Was Filed for
Record On The 16TH Day Of November, 2009 at 08:56:48 AM
And Was Duly Recorded as Instrument # 1583169
Of The Records Of Santa Fe County

21
22 Witness My Hand And Seal Of Office
Valerie Espinoza
23 Deputy Valerie Espinoza County Clerk, Santa Fe, NM

Area	Acres	Population	Housing Units
AREA 3 (North of Cerrillos Rd. South of Agua Fria Traditional Village)	124.17	369	137
AREA 6 (Airport / W/WTP)	334.70		
AREA 8 (West side of Cerrillos Rd. near Ocate Road)	49.23	339	120
AREA 9 (Premium Outlets)	38.24		
AREA 10 (East side of Cerrillos across from Ocate Road)	44.94		
AREA 11 (Immediately West of Nava Ade)	88.27	227	101
AREA 13 (East side of Richards Avenue, North of I-25 & West of Pueblos del Sol)	170.10	206	71
AREA 15 (East of Carlos Rey del Sur Subd. - North of I-25)	48.05	13	7
AREA 16 (Lands West of Old Pecos Trail and North of I-25)	136.21	131	55
AREA 17 (Property along west side of Old Santa Fe Trail)	57.43	28	16
I-25 ROW (from NM 599 to Old Pecos Trail)	865		
TOTALS	1,956.36	1313	587

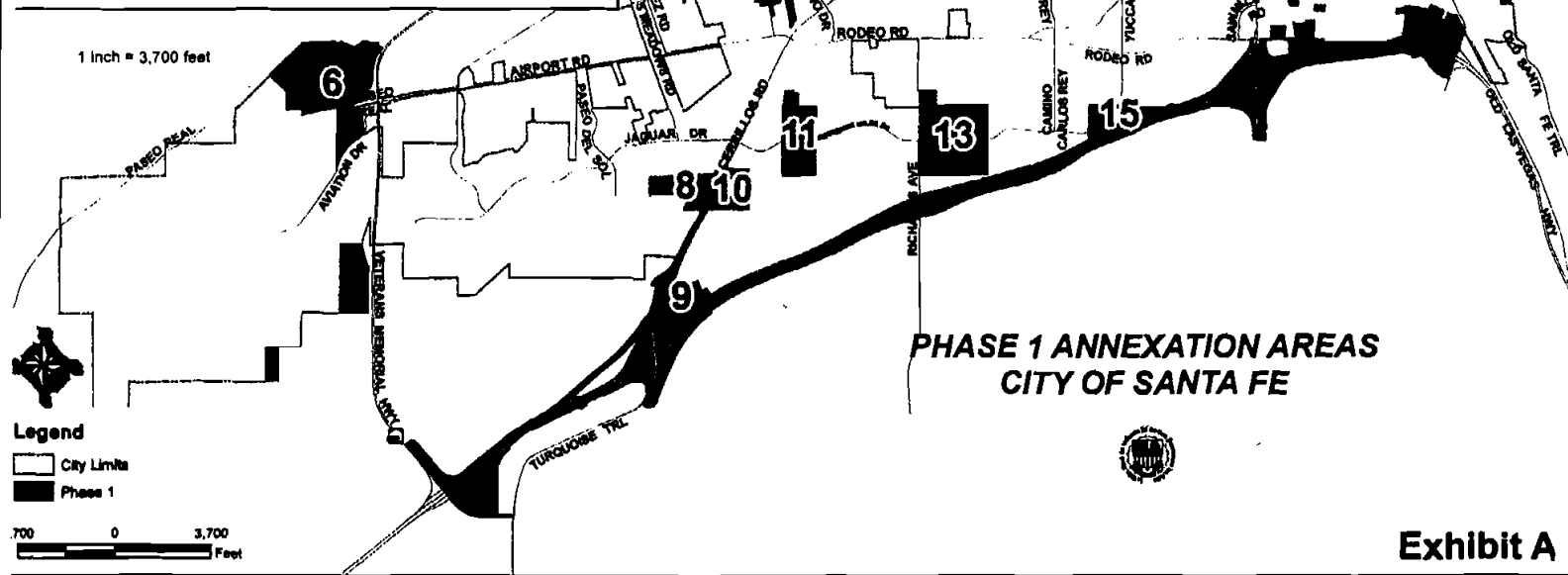
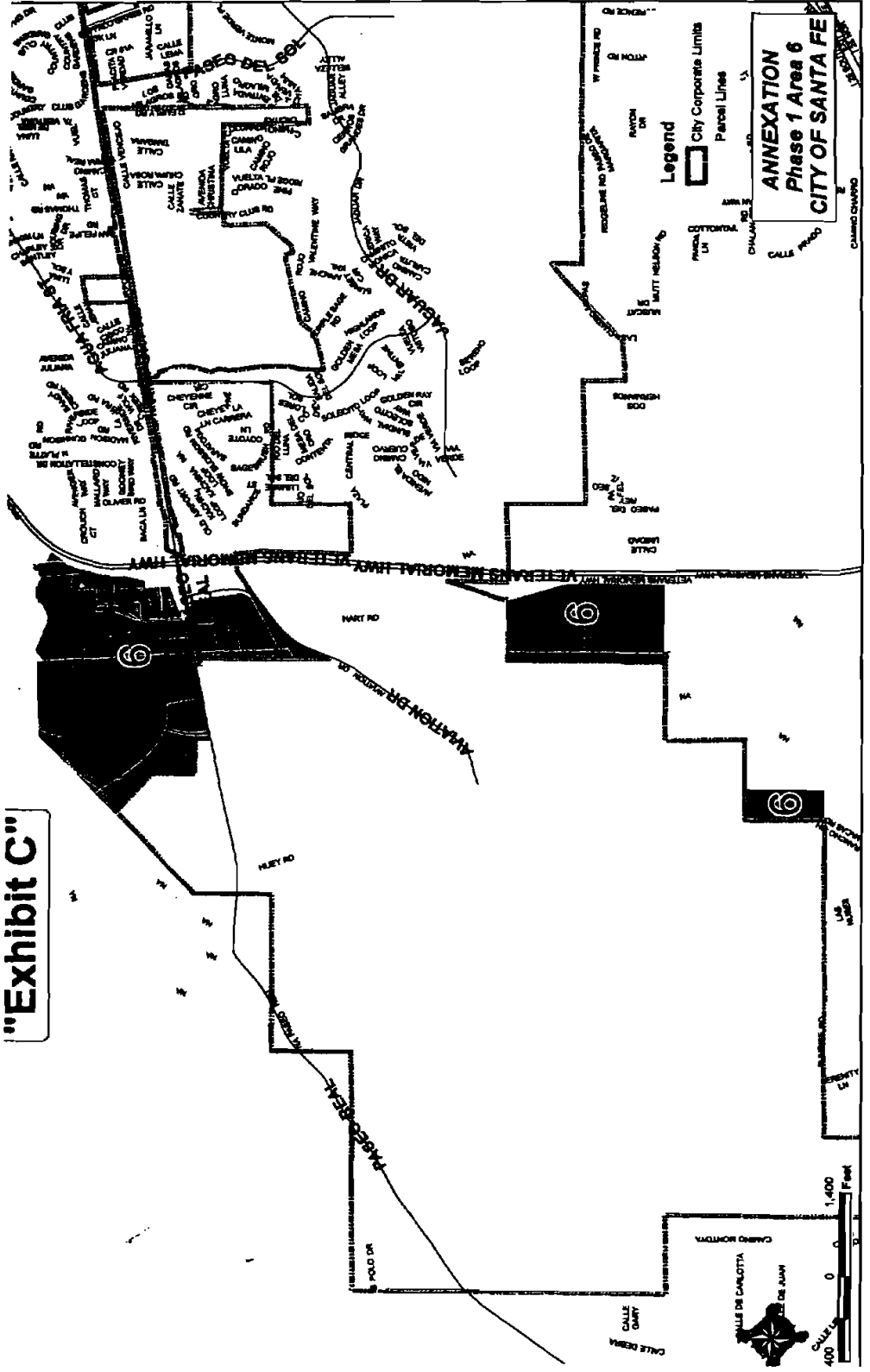


Exhibit A

2003/01/11 09:00:00 AM

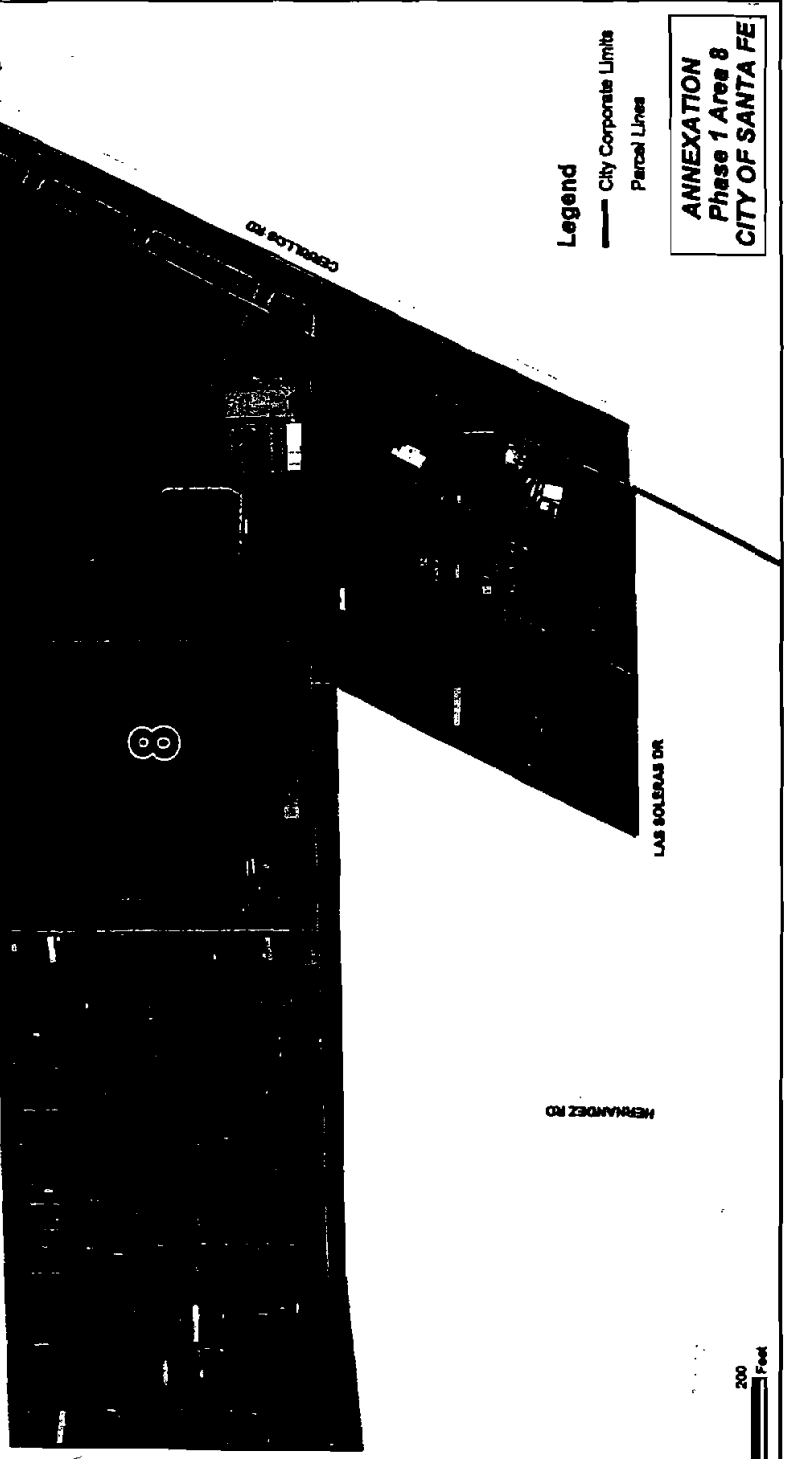
"Exhibit C"



RECEIVED 11/11/11 11:11 AM

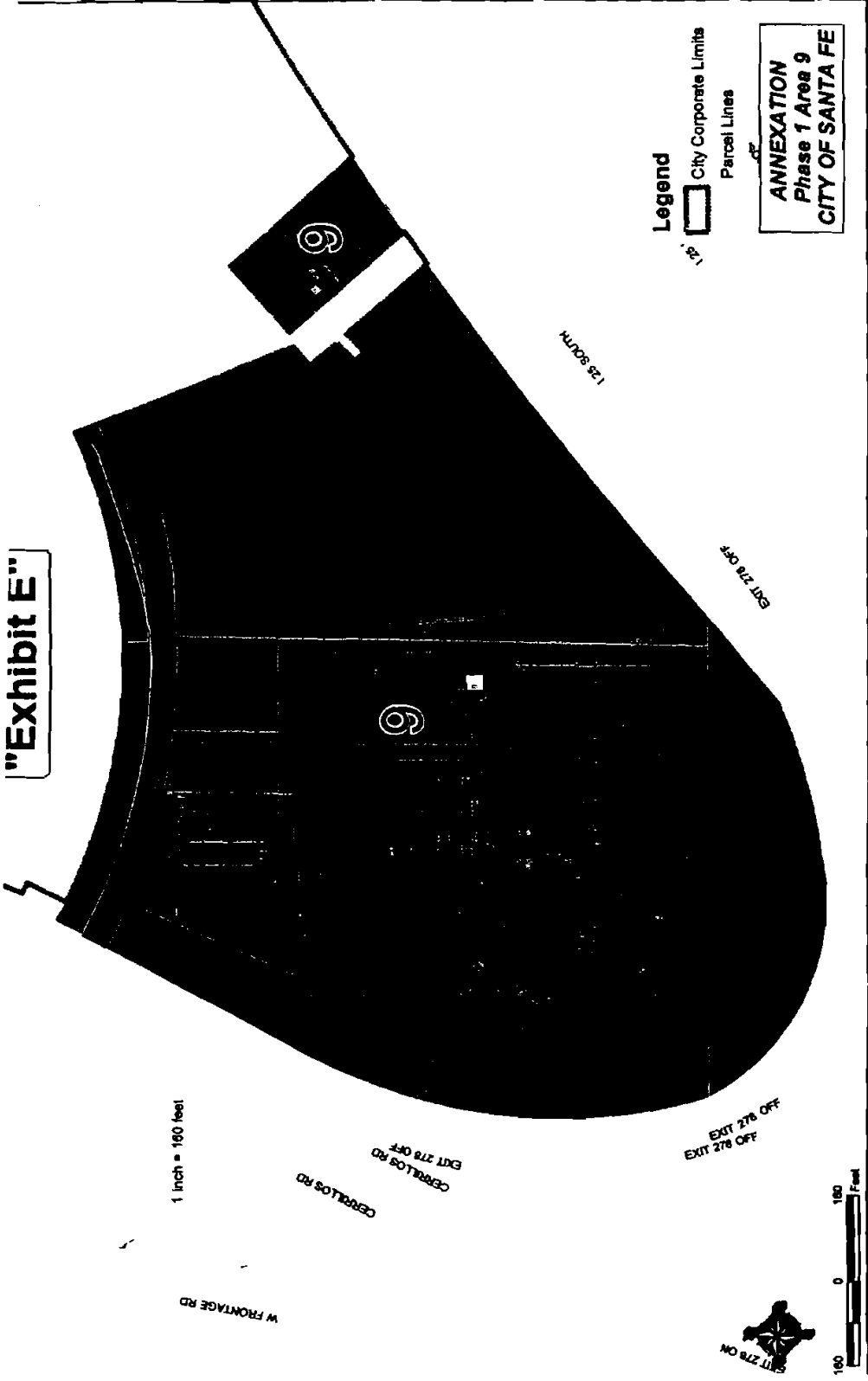
"Exhibit D"

UNNO
D/L



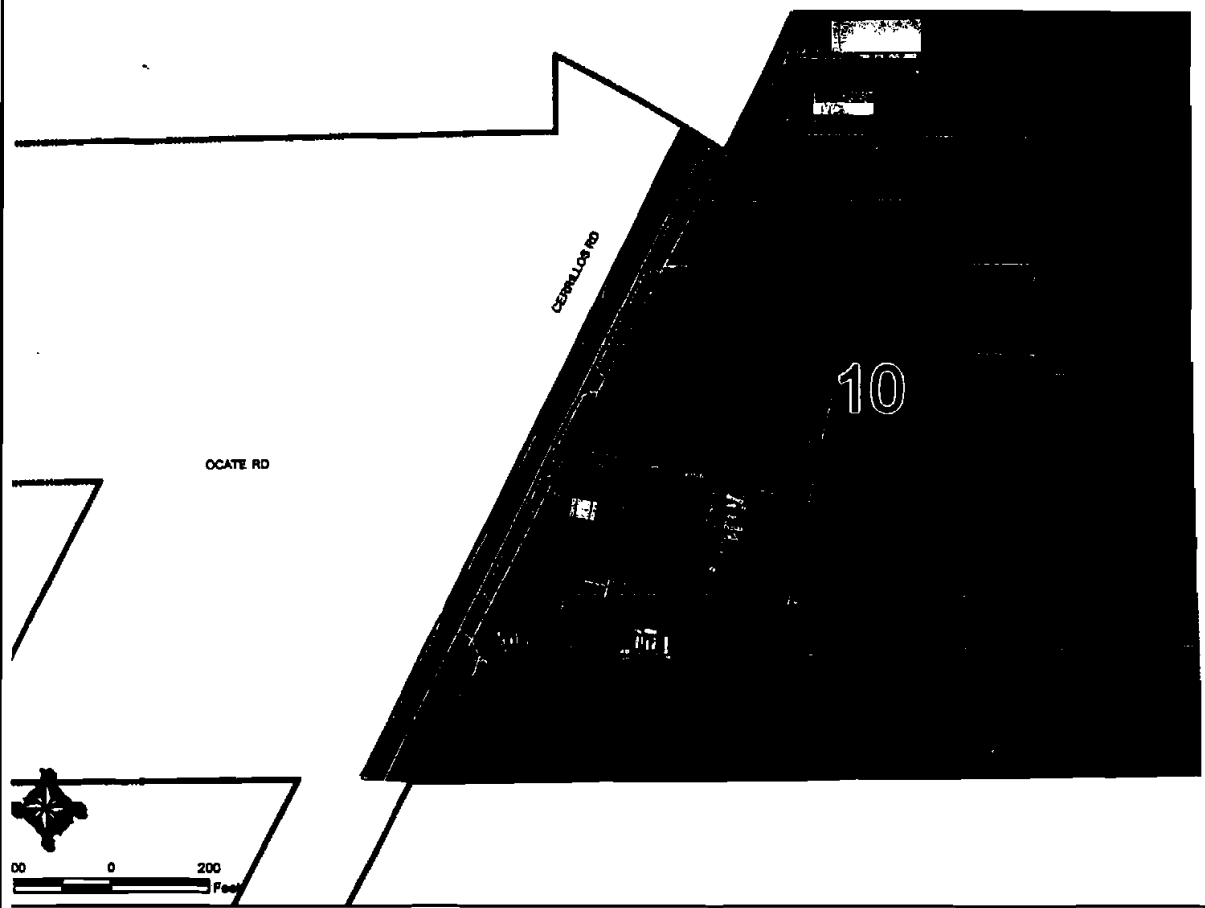
2025/01/11 09:00:00 AM UNNO D/L

"Exhibit E"



2025/01/13 09:00:00 AM

"Exhibit F"



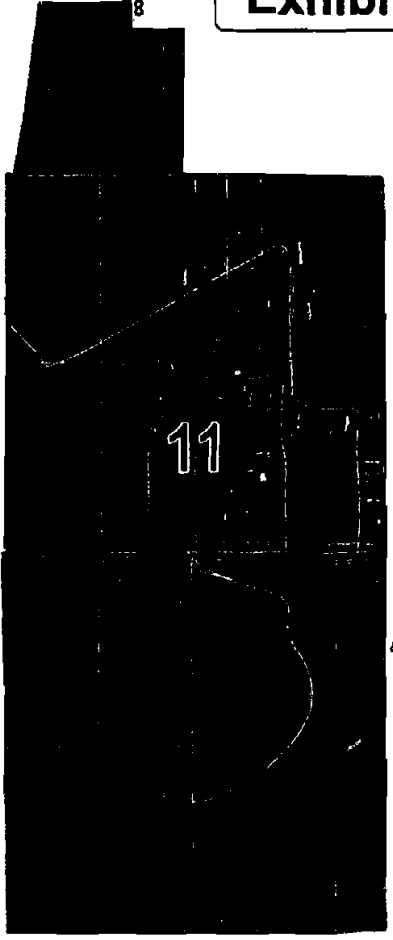
Legend

-  City Corporate Limits
-  Parcel Lines

**ANNEXATION
Phase 1 Area 10
CITY OF SANTA FE**

REC'D CLERK RECORDED 11/18/2005

"Exhibit G"



CAMINO OTTIZ
CAMINO ENTRADA
CORNELIUS RD

JAGUAR DR

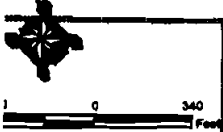
CORNELIUS RD
CORNELIUS RD

CAMINO
MCQUEENIA

WINDING
TRAIL LN
CAMINO 241 LN
COSTE
SANTA
CLOSA
SANTA
MIDNIGHT OWL
LILJEBRAND CROWN LN
NEW BUSH DR
VICTORIA LN
LORRAINE LN
BO BRYAN LN
CANTON
MOUNTAIN LN
LOST PATRIOT LN
SANDY HILLS LN
HIDDEN CRICKET
SILENT WING
SUNSHINE BLVD
CHANGING GARDENS LN
INDIAN SUMMER LN
CHANGING PATHS RD
WINDING WING RD
WINDING WING
WINDING WING
LONG SHADOW LN
LONG SHADOW LN
AUTUMN LEAF
WALKING BARK RD
SOARING EAGLE LN
CACTUS FLOWER
CACTUS FLOWER LN
HOWLING WOLF LN

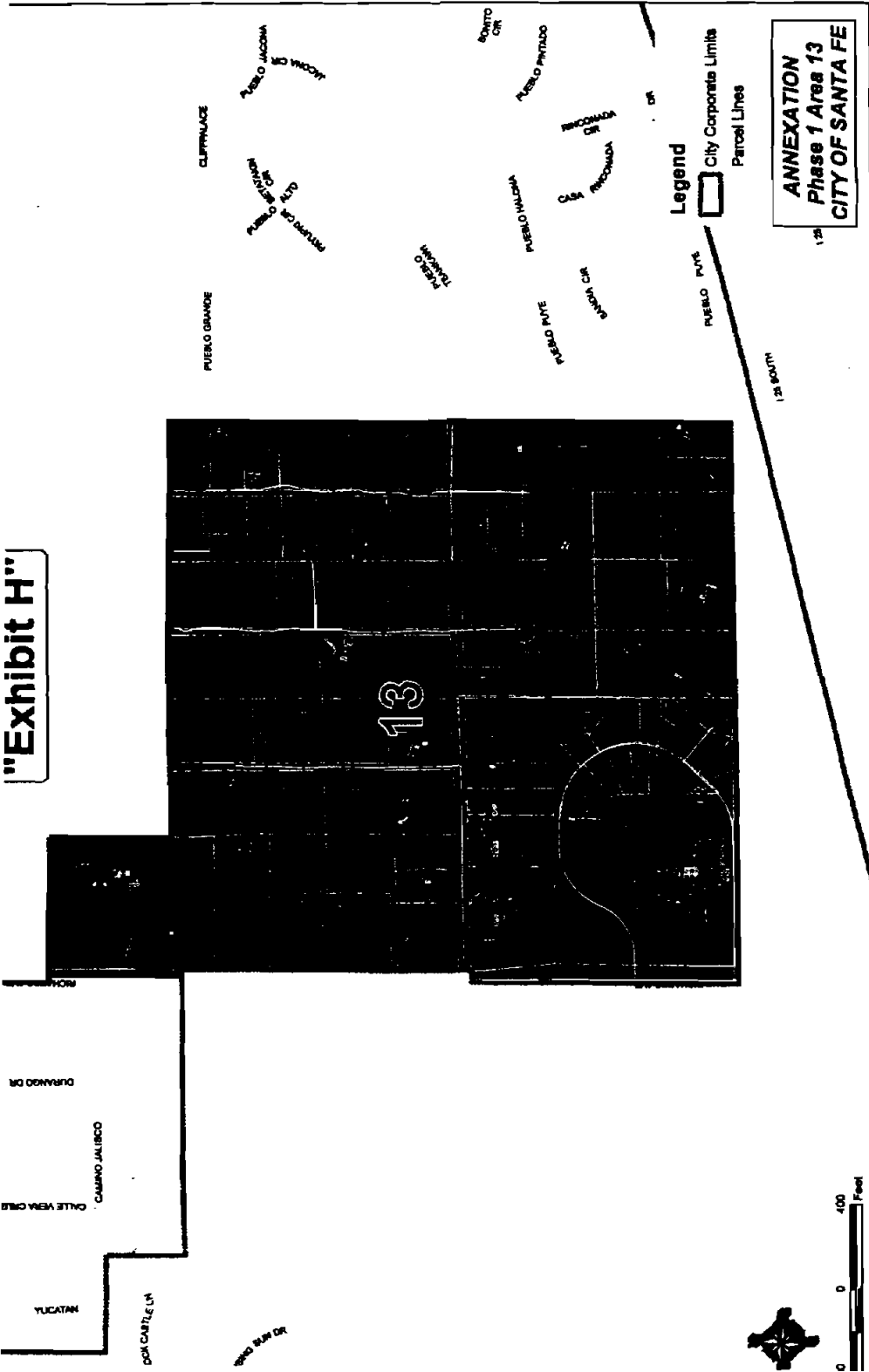
Legend
City Corporate Limits
Parcel Lines

ANNEXATION
Phase 1 Area 11
CITY OF SANTA FE



REC'D 11/13/2009

"Exhibit H"

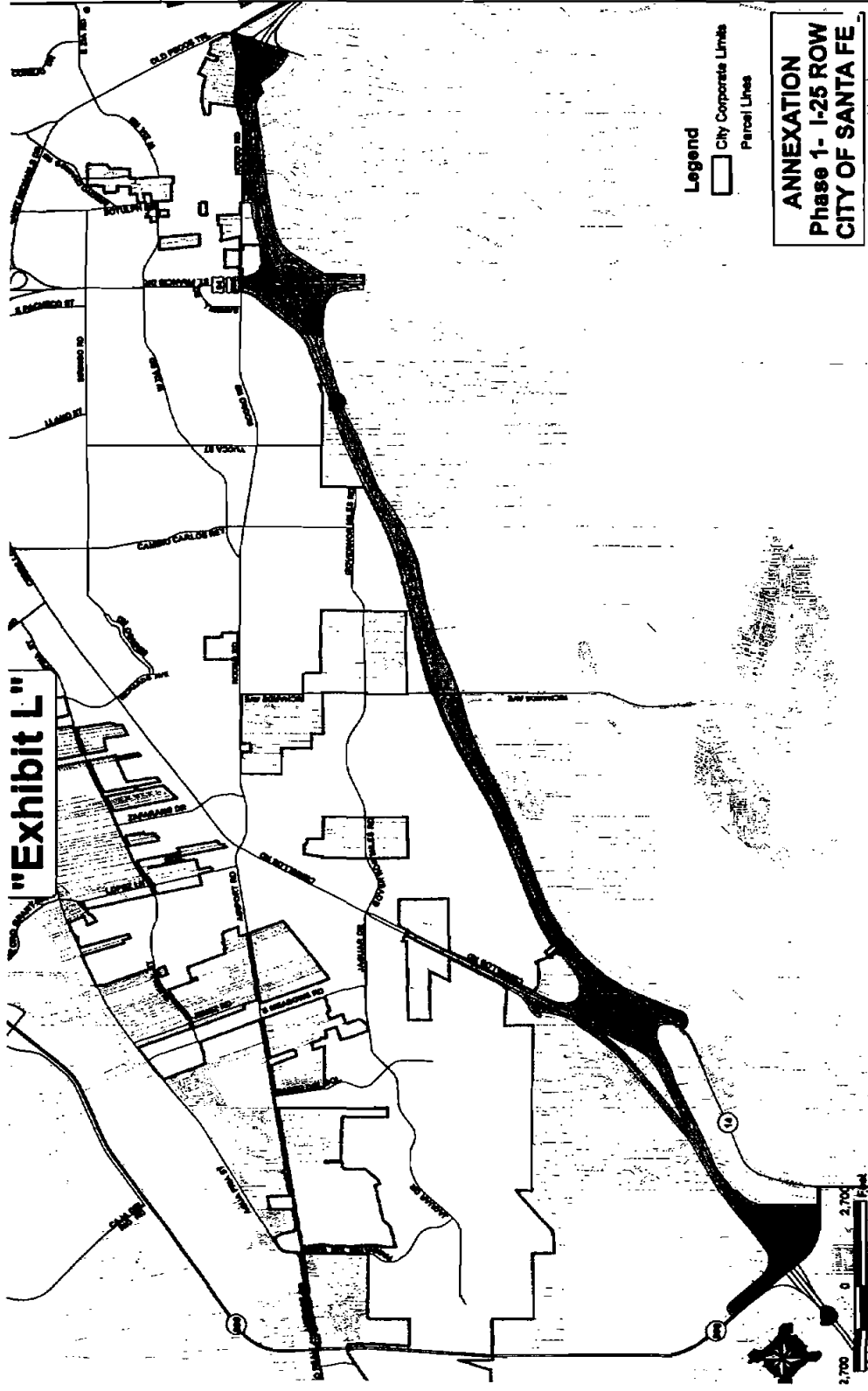


ANNEXATION PHASE 1 AREA 13 CITY OF SANTA FE



0 0 400 Feet

"Exhibit L"



2022/01/11 09:00:00 AM 0.00