

1
2
3
4
5
6
7
8
9
10
11
12
13
14
15
16
17
18
19
20
21
22
23
24
25

CITY OF SANTA FE, NEW MEXICO

ORDINANCE NO. 2011-27

AN ORDINANCE

AMENDING SECTION 9-1.3 SFCC 1987 TO REVISE THE MUNICIPAL ELECTION DISTRICT MAP TO REFLECT REDISTRICTING RESULTING FROM THE 2010 CENSUS; AMENDING SECTION 9-1.4 SFCC 1987 TO SPECIFY WHICH ELECTION THE REVISIONS OF THE DISTRICT BOUNDARIES WILL BE EFFECTIVE; AND AMENDING SECTION 9-1.4.1 SFCC 1987 TO DESIGNATE THE APPROVAL DATE FOR THE REDISTRICTING PLAN AND PLAN DOCUMENTS.

BE IT ORDAINED BY THE GOVERNING BODY OF THE CITY OF SANTA FE:

Section 1. Section 9-1.3 SFCC 1987 (being Ord. #1985-60, §3 as amended) is amended to read:

9-1.3 Creation of Districts.

A. Except as otherwise provided by ordinance, city councilors shall reside in and be elected from municipal election districts.

B. The resident qualified electors in each of the four (4) municipal election districts shall elect one (1) city councilor from each district for a four (4) year term, so that each municipal election district is represented by two (2) city councilors serving staggered four (4) year terms.

C. There are created four (4) two (2)-member municipal election districts which include the following precincts and portions of precincts located within the municipal boundaries of the city of Santa Fe:

- (1) District 1: Precincts 8, 9, 10, 11, 20, 21, 22, 24, 25, 26, 27, 28, 30, 32, 33,

1 and 83;

2 (2) District 2: Precincts 36, 37, 41, 42, 43, 44, 45, 46, 47, 48, 52, 53, 54 and
3 55;

4 (3) District 3: Precincts 12, 31, 34, 62, 64, 66, 67, 75, 80 and 86;

5 (4) District 4: Precincts 29, 35, 38, 39, 49, 50, 51, 56, 74, 76, 77 and 78.

6 D. The boundaries of each municipal election district are shown on the municipal
7 election district map revised as of August 1, 2011, hereby adopted as the official districting map
8 and is to be kept in the custody of the municipal clerk.

9 **Section 2. Section 9-1.4 SFCC 1987 (being Ord. #1985-60, §4, as amended) is**
10 **amended to read:**

11 **9-1.4 Districting.**

12 A. In establishing the district boundaries, the governing body shall consider the
13 following principles in the following order of priority:

14 (1) Each district shall contain as nearly as possible substantially the same
15 population based upon the most recent federal census;

16 (2) Districting plans must avoid dilution of minority voting strength;

17 (3) Communities of interest, including those based upon ethnic and
18 economic factors, shall be preserved within a single district whenever reasonable;

19 (4) Each district shall be formed of compact, contiguous territories. The total
20 length of all district boundary lines shall be as short as possible;

21 (5) Districting plans shall compensate for U.S. Census undercount of
22 minorities.

23 B. District boundaries shall be reviewed and revised, if necessary, following each
24 decennial federal census.

25 C. Revisions to the district boundaries in existence on the date of adoption of this

1 ordinance shall be effective beginning with the March, 2012 regular municipal election.

2 **Section 3. Section 9-1.4.1 SFCC 1987 (being Ord. No. 2002-7, §§ 4, 5, as**
3 **amended) is amended to read:**

4 **9-1.4.1 Incorporation by Reference**

5 The approved redistricting plan and plan documents (subsections 9-1.3 and 9-1.4)
6 presented to and utilized by the governing body at the August 1, 2011 meeting in the course
7 revising the boundaries of the four (4) city council districts are incorporated by reference. A true
8 and correct copy of said plan and plan documents shall be retained by the municipal clerk and
9 made available for inspection by the public.

10 PASSED, APPROVED and ADOPTED this 1st day of August, 2011,

11

12



13

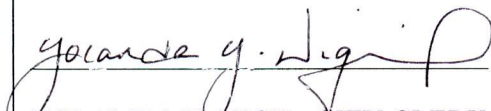
DAVID COSS, MAYOR

14

ATTEST:

15

16


YOLANDA Y. VIGIL, CITY CLERK

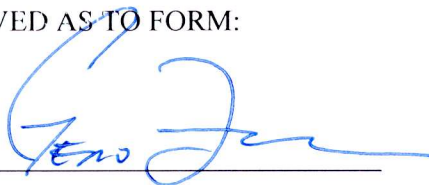
17

18

APPROVED AS TO FORM:

19

20



21

GENO ZAMORA, CITY ATTORNEY

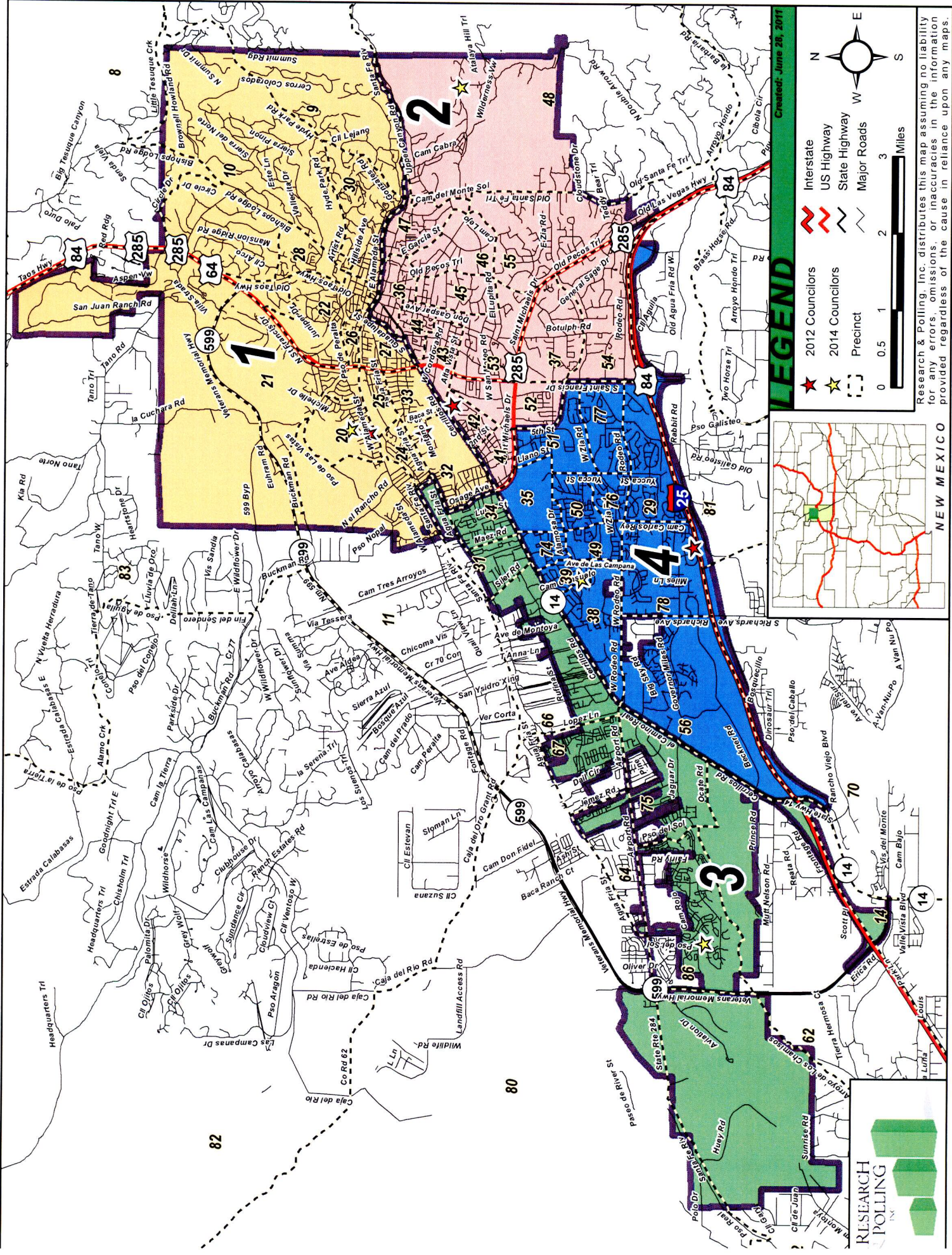
22

23

24

25

M/Melissa/Ordinances 2011/2011-27 Redistricting



Research & Polling, Inc. distributes this map assuming no liability for any errors, omissions, or inaccuracies in the information provided regardless of the cause in reliance upon any maps.